

Original Research Paper

The Inverse Kinematics of the Plane System 2-3 in a Mechatronic MP2R System, by a Trigonometric Method

¹Relly Victoria Virgil Petrescu, ²Raffaella Aversa, ²Antonio Apicella, ³MirMilad Mirsayar, ⁴Samuel Kozaitis, ⁵Taher Abu-Lebdeh and ¹Florian Ion Tiberiu Petrescu

¹ARoTMM-IFTToMM, Bucharest Polytechnic University, Bucharest, (CE) Romania

²Advanced Material Lab, Department of Architecture and Industrial Design, Second University of Naples, 81031 Aversa (CE) Italy

³Department of Civil Engineering, Texas A&M University, College Station, TX (Texas), USA

⁴Florida Institute of Technology, USA

⁵North Carolina A and T State University, USA

Article history

Received: 08-12-2017

Revised: 13-12-2017

Accepted: 20-12-2017

Corresponding Author:

Florian Ion Tiberiu Petrescu
ARoTMM-IFTToMM, Bucharest
Polytechnic University,
Bucharest, (CE), Romania
E-mail: scipub02@gmail.com

Abstract: Robots have penetrated today in almost all industrial fields, being much more precise than humans in the execution of operations, but also faster, more dynamic, more stable and more resilient, working 24 h of the 24 h possible, in any season, breaks, holidays, vacations and especially without getting sick. The most important fact is that they can also perform special operations that man can't do. So, for example, they can work in toxic, contaminated, mined, dangerous, or airless environments (in the cosmos, under water or underground), they can also position the parts very precisely so they can be used for fine, special processing at high precision operations, excellent mechanical processing, exceptional medical operations and even in all medical operations today, helping the doctor manage the patient's surgery with amazing precision, especially when it comes to open heart, brain, kidneys, liver, etc. Robots should not be fed and yet they can have an extremely long life. They can help us conquer both the underwater spaces and the cosmic spaces. Robots have stunning work precision and a faster execution speed than a man. In addition, their very precise positioning makes robot operations a great advantage, which can no longer be neglected. In repetitive and tiring work they are irreplaceable. The most commonly used anthropomorphic robotic mechatronic systems, which are currently being used, have been studied by eliminating the heavy, matrix 3D spatial system, the study being simplified in a plan by considering the main work plan of the system and the plan, the rotation required to restore the spatial parameters of the anthropomorphic 3D system. In other words, we can greatly ease the work of the anthropomorphic robot engineer by moving from 3D systems to a 2D system. In this study we will study the inverse cinematics of the plan system, 2D, as the most important one. In general, end effector positions are known (required) and the positions of the 2D module elements and the necessary rotations of the actuators for their creation must be determined. In the kinematics we know the kinematic parameters x_M and y_M , which represent the scaled coordinates of the point M (endeffector M) and must be determined by analytical calculations the parameters φ_{20} and φ_{30} .

Keywords: Anthropomorphic Robots, Inverse Kinematics, 3D Calculation, 2D Calculation, A Trigonometric Method

Introduction

The most commonly used anthropomorphic robotic mechatronic systems, which are currently being used, have been studied by eliminating the heavy, matrix 3D spatial system, the study being simplified in a plan by considering the main work plan of the system and the plan, the rotation required to restore the spatial parameters of the anthropomorphic 3D system.

In other words, we can greatly ease the work of the anthropomorphic robot engineer by moving from 3D systems to a 2D system. In this study we will study the inverse cinematics of the plan system, 2D, as the most important one. In general, end effector positions are known (required) and the positions of the 2D module elements and the necessary rotations of the actuators for their creation must be determined. In the kinematics we know the kinematic parameters x_M and y_M , which represent the scaled coordinates of the point M (endeffector M) and must be determined by analytical calculations the parameters φ_{20} and φ_{30} . First we determine the intermediate parameters d and φ with already known (3) relations.

Robots have penetrated today in almost all industrial fields, being much more precise than humans in the execution of operations, but also faster, more dynamic, more stable and more resilient, working 24 h of the 24 h possible, in any season, breaks, holidays, vacations and especially without getting sick.

The most important fact is that they can also perform special operations that man can't do. So, for example, they can work in toxic, contaminated, mined, dangerous, or airless environments (in the cosmos, under water or underground), they can also position the parts very precisely so they can be used for fine, special processing at high precision operations, excellent mechanical processing, exceptional medical operations and even in all medical operations today, helping the doctor manage the patient's surgery with amazing precision, especially when it comes to open heart, brain, kidneys, liver, etc.

Robots should not be fed and yet they can have an extremely long life. They can help us conquer both the underwater spaces and the cosmic spaces.

Robots have stunning work precision and a faster execution speed than a man. In addition, their very precise positioning makes robot operations a great advantage, which can no longer be neglected. In repetitive and tiring work they are irreplaceable.

Today the moving mechanical systems are utilized in almost all vital sectors of humanity (Reddy *et al.*, 2012). The robots are able to process integrated circuits (Aldana *et al.*, 2013) sizes micro and nano, on which the man they can be seen only with electron microscopy (Lee, 2013). Dyeing parts in toxic environments,

working in chemical and radioactive environments (Padula and Perdereau, 2013; Perumaal and Jawahar, 2013), or at depths and pressures at the deep bottom of huge oceans, or conquest of cosmic space and visiting some new exoplanets, are with robots systems possible (Dong *et al.*, 2013) and were turned into from the dream in reality (Garcia *et al.*, 2007), because of use of mechanical platforms sequential gearbox (Cao *et al.*, 2013; Petrescu, 2009).

The man will be able to carry out its mission supreme (Tang *et al.*, 2013; Tong *et al.*, 2013), conqueror of new galaxies (Flavio de Melo *et al.*, 2012), because of mechanical systems sequential gear-box (robotics systems) (Garcia-Murillo *et al.*, 2013).

Robots were developed and diversified (Lin *et al.*, 2013), different aspects (He *et al.*, 2013), but today, they start to be directed on two major categories: Systems serial (Liu *et al.*, 2013; Petrescu and Petrescu, 2011b) and parallel systems (Petrescu and Petrescu, 2012c). Parallel systems are more solid (Tabaković *et al.*, 2013; Wang *et al.*, 2013) but more difficult to designed and handled and for this reason, the serial systems were those which have developed the most. In medical operations or radioactive environments are preferred mobile systems parallel, because of their high accuracy positioning.

As examples of such combined mechanisms, several kinematic schemes of gears and gears can be observed, presented by Kojevnikov (1969), (Autorenkollektiv, 1968), Şaskin (1963; 1971), Maros (1958), Rehwald and Luck (200; 2001), Antonescu (1993; 2003; Antonescu and Mitache, 1989).

The main problems with plane and spatial gears and gears refer to kinematic analysis and geometric-kinematic synthesis under certain conditions imposed by technological processes, Bruja and Dima (2011), Buda and Mateucă (1989), Luck and Modler (1995), Niemeyer (2000), Tutunaru (1969), Popescu (1977), Braune (2000), Dudita (1989), Lichtenheldt (1995), Lederer (1993), Lin (1999), Modler and Wadewitz (1998; 2001; Modler, 1979), Neumann (1979; 2001), Stoica (1977), Petrescu and Petrescu (2011c; 2011d; Petrescu, 2012d; 2012e); (Petrescu, 2016; Petrescu *et al.*, 2017a; 2017b; 2017c; 2017d; 2017e; 2017f; 2017g; 2017h; 2017i; 2017j; 2017k; 2017l; 2017m; 2017n; 2017o; 2017p; 2017q; Aversa *et al.*, 2017a; 2017b; 2017c; 2017d; 2017e; 2016a; 2016b; 2016c; 2016d; 2016e; 2016f; 2016g; 2016h; 2016i; 2016j; 2016k; 2016l; 2016m; 2016n; 2016o; Mirsayar *et al.*, 2017; Petrescu and Petrescu, 2016a; 2016b; 2016c, 2013a; 2013b; 2013c; 2013d, 2012a; 2012b; 2012c; 2012d; 2011a; 2011b; Petrescu, 2012a; 2012b; 2012c, 2009; Petrescu and Calautit, 2016a; 2016b; Petrescu *et al.*, 2016a; 2016b; Maros, 1958; Modler and Wadewitz, 2001; Manolescu, 1968; Margine, 1999).

Materials and Methods; the Trigonometric Method

Figure 1 shows the geometric-kinematic scheme of a base structure 3R.

From this platform you can study by adding any other modern n-R scheme.

The platform (system) of Fig. 1 has three degrees of mobility, made by three actuators (electric motors) or actuators. The first electric motor trains the entire system in a rotation motion around a vertical axis O_0z_0 . The motor (actuator) number 1 is mounted on the fixed member (bay, 0) and drives the mobile element 1 in a rotation motion around a vertical axis. On the mobile element 1, then all the other components (components) of the system are built.

There follows a planar (vertical) cinematic chain consisting of two movable elements and two kinematic motor couplings. It is the movable kinematic elements 2 and 3, the assembly 2,3 being moved by the second actuator mounted in the coupling A fixed on the element 1. Thus the second electric motor fixed by the element 1 will drive the element 2 in a relative rotation relative to element 1, but automatically it will move the entire kinematic chain 2-3.

The last actuator (electric motor) fixed by element 2 in B will rotate element 3 (relative to 2).

The rotation φ_{10} made by the first actuator is also relative (between elements 1 and 0) and absolute (between elements 1 and 0).

The rotation φ_{20} of the second actuator is also relative (between elements 2 and 1) and absolute (between elements 2 and 0) due to the positioning of the system.

The rotation $\theta = \varphi_{32}$ of the third actuator is only relative (between elements 3 and 2), the corresponding absolute (between elements 3 and 0) being a function of $\theta = \varphi_{32}$ and φ_{20} .

The kinematic chain 2-3 (made up of moving kinematic elements 2 and 3) is a planar cinematic chain that falls into one plane or one or more parallel planes. It is a special cinematic system that will be studied separately. The kinematic coupler A (O_2) and B (O_3) become the first fixed coupler and the second movable coupler, both of which are C5 cinematic couplers, of rotation.

The kinematic chain 2-3 having the degree of mobility 2 must be driven by two motors.

It is preferred that the two actuators are two electric, DC, or alternating motors. The action can also be done with other engines. Hydraulic, pneumatic, sonic, etc.

The schematic diagram of the planar kinematic chain 2-3 (Fig. 2) resembles its kinematic scheme.

The guide element 2 is connected to the fixed element 1 by the motor coupler O_2 and the drive element 3 is connected to the mobile element 2 by the motor coupler O_3 .

This results in a two-degree open cinematic chain made by the two actuators, ie the two electric motors mounted in the kinematic couplers A and B or O_2 or O_3 .

Figure 3 shows the kinematic diagram of the open 2-3 chain (Petrescu, 2014).

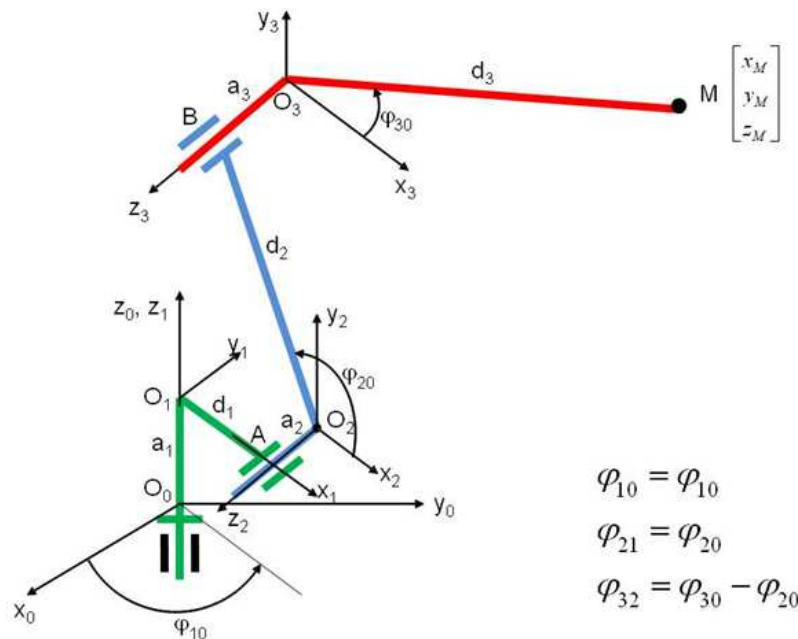


Fig. 1: The geometric-kinematic scheme of a base structure 3R

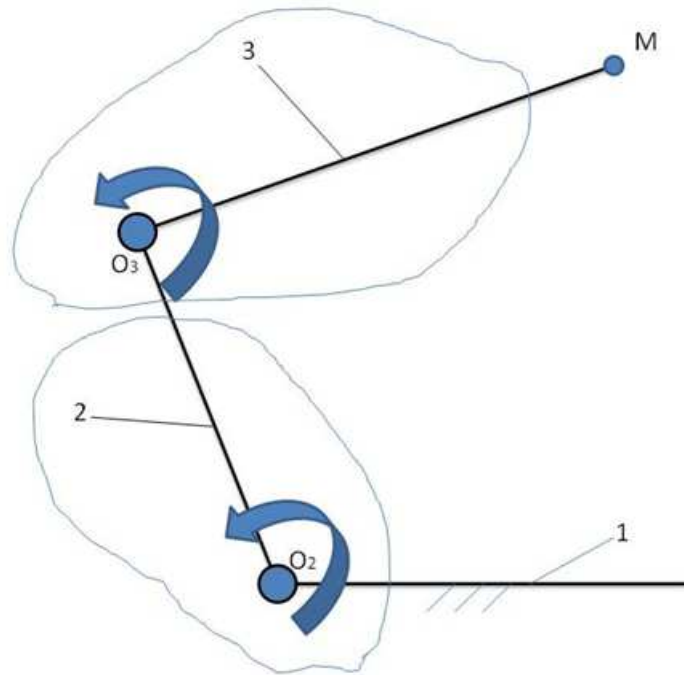


Fig. 2: The schematic diagram of the planar kinematic chain 2-3 bound to the element 1 considered to be fixed

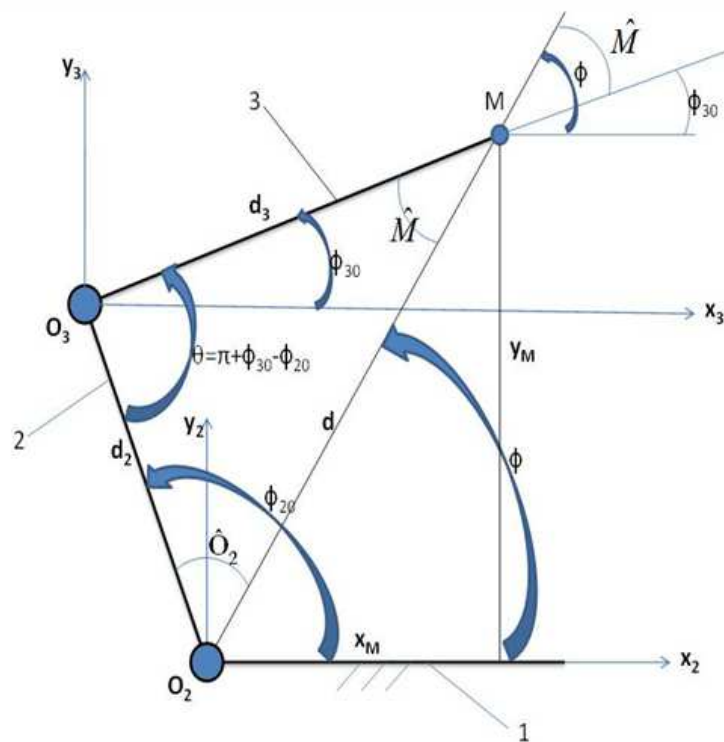


Fig. 3: The kinematic scheme of the planar kinematic chain 2-3 bound to element 1 considered fixed

In the kinematics we know the kinematic parameters x_M and y_M , which represent the scaled coordinates of the point M (endeffector M) and must be determined by

analytical calculations the parameters φ_{20} and φ_{30} . First we determine the intermediate parameters d and φ with already known (1) relations:

$$\begin{cases} d^2 = x_M^2 + y_M^2; d = \sqrt{x_M^2 + y_M^2} \\ \cos \varphi = \frac{x_M}{d} = \frac{x_M}{\sqrt{x_M^2 + y_M^2}}; \\ \sin \varphi = \frac{y_M}{d} = \frac{y_M}{\sqrt{x_M^2 + y_M^2}} \\ \varphi = \text{semm}(\sin \varphi) \cdot \arccos(\cos \varphi) \end{cases} \quad (1)$$

In the triangle of some O_2O_3M we know the lengths of its three sides, d^2 , d_3^2 (constants) and d (variable), so that all the other elements of the triangle, namely its angles and the trigonometric functions of (we are particularly interested in sin and cos).

Different methods can be used to determine the angles φ_{20} and φ_{30} , of which two of them (as being most representative) will be presented: The trigonometric method and the geometric method.

Determination of Positions

Scalar position equations are written (2):

$$\begin{cases} d_2 \cdot \cos \varphi_{20} + d_3 \cdot \cos \varphi_{30} = x_M \\ d_2 \cdot \sin \varphi_{20} + d_3 \cdot \sin \varphi_{30} = y_M \\ \cos^2 \varphi_{20} + \sin^2 \varphi_{20} = 1 \\ \cos^2 \varphi_{30} + \sin^2 \varphi_{30} = 1 \end{cases} \quad (2)$$

The problem of this two scalar, trigonometric, two unknown equations (φ_{20} and φ_{30}) is that they have been transcribed (they are trigonometric, transcendental equations, where the unknown does not appear directly φ_{20} but in the form of $\cos \varphi_{20}$ and $\sin \varphi_{20}$, so in reality in the two trigonometric equations we no longer have two unknown but four: $\cos \varphi_{20}$, $\sin \varphi_{20}$, $\cos \varphi_{30}$ and $\sin \varphi_{30}$).

To solve the system we need two more equations, so in the system (2) we have added two more trigonometric equations, namely the golden basic trigonometric equations as it is called for the angle φ_{20} and separated for the angle φ_{30} .

In order to solve the first two equations of the system (2) we write in the form (3):

$$\begin{cases} d_2 \cdot \cos \varphi_{20} - x_M = -d_3 \cdot \cos \varphi_{30} \\ d_2 \cdot \sin \varphi_{20} - y_M = -d_3 \cdot \sin \varphi_{30} \end{cases} \quad (3)$$

Each equation of the system (3) rises to square, then sums up both equations (raised to square) and obtains the equation of form (4):

$$\begin{aligned} & d_2^2 \cdot (\cos^2 \varphi_{20} + \sin^2 \varphi_{20}) + x_M^2 + y_M^2 \\ & - 2 \cdot d_2 \cdot x_M \cdot \cos \varphi_{20} - 2 \cdot d_2 \cdot y_M \cdot \sin \varphi_{20} \\ & = d_3^2 \cdot (\cos^2 \varphi_{30} + \sin^2 \varphi_{30}) \end{aligned} \quad (4)$$

Now is the time to use the two trigonometric gold "equations of gold" written at the end of the system (2), with which Equation 4 gets simplified form (5):

$$\begin{aligned} & d_2^2 + x_M^2 + y_M^2 - 2 \cdot d_2 \cdot x_M \cdot \cos \varphi_{20} \\ & - 2 \cdot d_2 \cdot y_M \cdot \sin \varphi_{20} = d_3^2 \end{aligned} \quad (5)$$

The terms of Equation 5 are arranged in the more convenient form (6):

$$\begin{aligned} & d_2^2 - d_3^2 + x_M^2 + y_M^2 \\ & = 2 \cdot d_2 \cdot (x_M \cdot \cos \varphi_{20} + y_M \cdot \sin \varphi_{20}) \end{aligned} \quad (6)$$

Divide Equation 6 with $2 \cdot d_2$ and result in a new form (7):

$$x_M \cdot \cos \varphi_{20} + y_M \cdot \sin \varphi_{20} = \frac{d_2^2 - d_3^2 + x_M^2 + y_M^2}{2 \cdot d_2} \quad (7)$$

From Fig. 3 or System (1) the relationship (8) is noted:

$$x_M^2 + y_M^2 = d^2 \quad (8)$$

Insert (8) into (7) and amplify the right fraction with d so that the expression (7) takes the convenient form (9):

$$x_M \cdot \cos \varphi_{20} + y_M \cdot \sin \varphi_{20} = \frac{d_2^2 + d^2 - d_3^2}{2 \cdot d_2 \cdot d} \cdot d \quad (9)$$

Now is the moment of entering the cosine expression of the O_2 angle, depending on the sides of the triangle of some O_2O_3M (10):

$$\cos \hat{O}_2 = \frac{d_2^2 + d^2 - d_3^2}{2 \cdot d_2 \cdot d} \quad (10)$$

With relation (10) Equation 9 takes the simplified form (11):

$$x_M \cdot \cos \varphi_{20} - d \cdot \cos \hat{O}_2 = -y_M \cdot \sin \varphi_{20} \quad (11)$$

We want to eliminate $\sin \varphi_{20}$, which is why we have isolated the term in sin and square Equation 11, because by using the trigonometric gold equation of the angle φ_{20} , we transform sin into cos, the equation becoming one of the second degree in $\cos \varphi_{20}$. After picking up the square (11) it takes shape (12):

$$\begin{aligned} & x_M^2 \cdot \cos^2 \varphi_{20} + d^2 \cdot \cos^2 \hat{O}_2 \\ & - 2 \cdot d \cdot x_M \cdot \cos \hat{O}_2 \cdot \cos \varphi_{20} \\ & = y_M^2 \cdot \sin^2 \varphi_{20} \end{aligned} \quad (12)$$

The gold formula is used so that the expression (12) takes the form (13) which is conveniently arranged by grouping the terms into the shape (14):

$$\begin{aligned} & x_M^2 \cdot \cos^2 \varphi_{20} + d^2 \cdot \cos^2 \hat{O}_2 \\ & - 2 \cdot d \cdot x_M \cdot \cos \hat{O}_2 \cdot \cos \varphi_{20} \\ & = y_M^2 - y_M^2 \cdot \cos^2 \varphi_{20} \end{aligned} \quad (13)$$

$$\begin{aligned} & (x_M^2 + y_M^2) \cdot \cos^2 \varphi_{20} - 2 \cdot d \cdot x_M \cdot \cos \hat{O}_2 \cdot \cos \varphi_{20} \\ & - (y_M^2 - d^2 \cdot \cos^2 \hat{O}_2) = 0 \end{aligned} \quad (14)$$

The determinant of the second-degree Equation 14 just obtained, is calculated with the relation (15):

$$\begin{aligned} \Delta &= d^2 \cdot x_M^2 \cdot \cos^2 \hat{O}_2 + d^2 \cdot (y_M^2 - d^2 \cdot \cos^2 \hat{O}_2) \\ &= d^2 \cdot (x_M^2 \cdot \cos^2 \hat{O}_2 + y_M^2 - d^2 \cdot \cos^2 \hat{O}_2) \\ &= d^2 \cdot (y_M^2 - y_M^2 \cdot \cos^2 \hat{O}_2) \\ &= d^2 \cdot y_M^2 \cdot (1 - \cos^2 \hat{O}_2) = d^2 \cdot y_M^2 \cdot \sin^2 \hat{O}_2 \end{aligned} \quad (15)$$

The second order radical of the determinant is expressed as (16):

$$R = \sqrt{\Delta} = \sqrt{d^2 \cdot y_M^2 \cdot \sin^2 \hat{O}_2} = d \cdot y_M \cdot \sin \hat{O}_2 \quad (16)$$

The solutions of the second-degree equation in cosine (14) are written as (17):

$$\begin{aligned} \cos \varphi_{20,1,2} &= \frac{d \cdot x_M \cdot \cos \hat{O}_2 \mp d \cdot y_M \cdot \sin \hat{O}_2}{d^2} \\ &= \frac{x_M \cdot \cos \hat{O}_2 \mp y_M \cdot \sin \hat{O}_2}{d} \\ &= \frac{x_M}{d} \cdot \cos \hat{O}_2 \mp \frac{y_M}{d} \cdot \sin \hat{O}_2 \end{aligned} \quad (17)$$

Next, in solutions (17) we replace the corresponding trigonometric angle of functions φ , the expressions (17) obtaining the form (18):

$$\begin{aligned} \cos \varphi_{20,1,2} &= \frac{x_M}{d} \cdot \cos \hat{O}_2 \mp \frac{y_M}{d} \cdot \sin \hat{O}_2 \\ &= \cos \varphi \cdot \cos \hat{O}_2 \mp \sin \varphi \cdot \sin \hat{O}_2 = \cos(\varphi \pm \hat{O}_2) \\ \cos \varphi_{20} &= \cos(\varphi \pm \hat{O}_2) \end{aligned} \quad (18)$$

We now return to the Equation 11 that we order in form (19), in order to solve it in the sin. Equation 19 rises to square and using the trigonometric gold equation of the angle φ_{20} , form (20) is obtained:

$$x_M \cdot \cos \varphi_{20} = d \cdot \cos \hat{O}_2 - y_M \cdot \sin \varphi_{20} \quad (19)$$

$$\begin{cases} x_M^2 \cdot \cos^2 \varphi_{20} = d^2 \cdot \cos^2 \hat{O}_2 + y_M^2 \cdot \sin^2 \varphi_{20} \\ -2 \cdot y_M \cdot d \cdot \cos \hat{O}_2 \cdot \sin \varphi_{20} \\ x_M^2 - x_M^2 \cdot \sin^2 \varphi_{20} = d^2 \cdot \cos^2 \hat{O}_2 + y_M^2 \cdot \sin^2 \varphi_{20} \\ -2 \cdot y_M \cdot d \cdot \cos \hat{O}_2 \cdot \sin \varphi_{20} \\ (x_M^2 + y_M^2) \cdot \sin^2 \varphi_{20} - 2 \cdot y_M \cdot d \cdot \cos \hat{O}_2 \cdot \sin \varphi_{20} \\ - (x_M^2 - d^2 \cdot \cos^2 \hat{O}_2) = 0 \\ d^2 \cdot \sin^2 \varphi_{20} - 2 \cdot y_M \cdot d \cdot \cos \hat{O}_2 \cdot \sin \varphi_{20} \\ - (x_M^2 - d^2 \cdot \cos^2 \hat{O}_2) = 0 \end{cases} \quad (20)$$

The discriminative of the second-degree Equation 20 in cosine takes the form (21):

$$\begin{aligned} \Delta &= y_M^2 \cdot d^2 \cdot \cos^2 \hat{O}_2 + d^2 \cdot (x_M^2 - d^2 \cdot \cos^2 \hat{O}_2) \\ &= d^2 \cdot (x_M^2 + y_M^2 \cdot \cos^2 \hat{O}_2 - x_M^2 \cdot \cos^2 \hat{O}_2 - y_M^2 \cdot \cos^2 \hat{O}_2) \\ &= d^2 \cdot (x_M^2 - x_M^2 \cdot \cos^2 \hat{O}_2) = d^2 \cdot x_M^2 \cdot \sin^2 \hat{O}_2 \end{aligned} \quad (21)$$

The solutions of Equation 20 are written as (22):

$$\begin{aligned} \sin \varphi_{20} &= \frac{y_M \cdot d \cdot \cos \hat{O}_2 \pm x_M \cdot d \cdot \sin \hat{O}_2}{d^2} \\ &= \frac{y_M \cdot \cos \hat{O}_2 \pm x_M \cdot \sin \hat{O}_2}{d} = \frac{y_M}{d} \cdot \cos \hat{O}_2 \pm \frac{x_M}{d} \cdot \sin \hat{O}_2 \\ &= \sin \varphi \cdot \cos \hat{O}_2 \pm \cos \varphi \cdot \sin \hat{O}_2 = \sin(\varphi \pm \hat{O}_2) \\ \sin \varphi_{20} &= \sin(\varphi \pm \hat{O}_2) \end{aligned} \quad (22)$$

We obtained relations (23), from which the basic relationship is deduced (24):

$$\begin{cases} \cos \varphi_{20} = \cos(\varphi \pm \hat{O}_2) \\ \sin \varphi_{20} = \sin(\varphi \pm \hat{O}_2) \end{cases} \quad (23)$$

$$\varphi_{20} = \varphi \pm \hat{O}_2 \quad (24)$$

Repeat the procedure for determining the angle φ_{30} , starting again from the system (2), in which the first two transcendental equations are rewritten in the form (25) in order to eliminate the angle φ_{20} this time:

$$\begin{cases} d_2 \cdot \cos \varphi_{20} + d_3 \cdot \cos \varphi_{30} = x_M \\ d_2 \cdot \sin \varphi_{20} + d_3 \cdot \sin \varphi_{30} = y_M \\ \cos^2 \varphi_{20} + \sin^2 \varphi_{20} = 1 \\ \cos^2 \varphi_{30} + \sin^2 \varphi_{30} = 1 \end{cases} \quad (2)$$

$$\begin{cases} d_2 \cdot \cos \varphi_{20} = x_M - d_3 \cdot \cos \varphi_{30} \\ d_2 \cdot \sin \varphi_{20} = y_M - d_3 \cdot \sin \varphi_{30} \end{cases} \quad (25)$$

Raises the two equations of the system (25) to the square and assembles, resulting in the equation of form (26), which is arranged in more convenient forms (27) and (28):

$$d_2^2 = x_M^2 + y_M^2 + d_3^2 - 2 \cdot d_3 \cdot x_M \cdot \cos \varphi_{30} - 2 \cdot d_3 \cdot y_M \cdot \sin \varphi_{30} \quad (26)$$

$$x_M \cdot \cos \varphi_{30} + y_M \cdot \sin \varphi_{30} = d \cdot \frac{d^2 + d_3^2 - d_2^2}{2 \cdot d \cdot d_3} \quad (27)$$

$$x_M \cdot \cos \varphi_{30} + y_M \cdot \sin \varphi_{30} = d \cdot \cos \hat{M} \quad (28)$$

We want to determine it first on the basket so that we will initially isolate the term in the sin, Equation 28 being in the form (29), which by square-up generates expression (30), the expression which is arranged in the form (31):

$$x_M \cdot \cos \varphi_{30} - d \cdot \cos \hat{M} = -y_M \cdot \sin \varphi_{30} \quad (29)$$

$$\begin{aligned} x_M^2 \cdot \cos^2 \varphi_{30} + d^2 \cdot \cos^2 \hat{M} \\ - 2 \cdot d \cdot x_M \cdot \cos \hat{M} \cdot \cos \varphi_{30} \\ = y_M^2 - y_M^2 \cdot \sin^2 \varphi_{30} \end{aligned} \quad (30)$$

$$\begin{aligned} d^2 \cdot \cos^2 \varphi_{30} - 2 \cdot d \cdot x_M \cdot \cos \hat{M} \cdot \cos \varphi_{30} \\ - (y_M^2 - d^2 \cdot \cos^2 \hat{M}) = 0 \end{aligned} \quad (31)$$

Equation 31 is a second-degree equation in the cosine with the solutions given by the expression (32):

$$\begin{aligned} \cos \varphi_{30} \\ = \frac{d \cdot x_M \cdot \cos \hat{M} \pm \sqrt{d^2 \cdot x_M^2 \cdot \cos^2 \hat{M} + d^2 \cdot (y_M^2 - d^2 \cdot \cos^2 \hat{M})}}{d^2} \\ = \frac{d \cdot x_M \cdot \cos \hat{M} \pm \sqrt{d^2 \cdot y_M^2 \cdot (1 - \cos^2 \hat{M})}}{d^2} \\ = \frac{d \cdot x_M \cdot \cos \hat{M} \pm d \cdot y_M \cdot \sin \hat{M}}{d^2} \\ = \frac{x_M}{d} \cdot \cos \hat{M} \pm \frac{y_M}{d} \cdot \sin \hat{M} = \cos \varphi \cdot \cos \hat{M} \pm \sin \varphi \cdot \sin \hat{M} \\ = \cos(\varphi \mp \hat{M}) \\ \cos \varphi_{30} = \cos(\varphi \mp \hat{M}) \end{aligned} \quad (32)$$

We continue to write Equation 28 in the form (33), where the term is now isolated in the cosine for its elimination, in order to determine the sin:

$$x_M \cdot \cos \varphi_{30} = d \cdot \cos \hat{M} - y_M \cdot \sin \varphi_{30} \quad (33)$$

Equation 33 rises to square and obtains the equation of form (34), which is arranged in a convenient form (35):

$$\begin{aligned} x_M^2 \cdot (1 - \sin^2 \varphi_{30}) = d^2 \cdot \cos^2 \hat{M} + \\ + y_M^2 \cdot \sin^2 \varphi_{30} - 2 \cdot y_M \cdot d \cdot \cos \hat{M} \cdot \sin \varphi_{30} \end{aligned} \quad (34)$$

$$\begin{aligned} d^2 \cdot \sin^2 \varphi_{30} - 2 \cdot y_M \cdot d \cdot \cos \hat{M} \cdot \sin \varphi_{30} \\ - (x_M^2 - d^2 \cdot \cos^2 \hat{M}) = 0 \end{aligned} \quad (35)$$

Expression (35) is an equation of the grade II in the sine which admits the solutions given by the relation (36):

$$\begin{aligned} \sin \varphi_{30} \\ = \frac{d \cdot y_M \cdot \cos \hat{M} \mp \sqrt{d^2 \cdot y_M^2 \cdot \cos^2 \hat{M} + d^2 \cdot (x_M^2 - d^2 \cdot \cos^2 \hat{M})}}{d^2} \\ = \frac{d \cdot y_M \cdot \cos \hat{M} \mp \sqrt{d^2 \cdot x_M^2 \cdot (1 - \cos^2 \hat{M})}}{d^2} \\ = \frac{d \cdot y_M \cdot \cos \hat{M} \mp d \cdot x_M \cdot \sin \hat{M}}{d^2} \\ = \frac{y_M}{d} \cdot \cos \hat{M} \mp \frac{x_M}{d} \cdot \sin \hat{M} = \sin \varphi \cdot \cos \hat{M} \mp \cos \varphi \cdot \sin \hat{M} \\ = \sin(\varphi \mp \hat{M}) \\ \sin \varphi_{30} = \sin(\varphi \mp \hat{M}) \end{aligned} \quad (36)$$

The relations (37) from which the expression (38) is deduced are also retained:

$$\begin{cases} \cos \varphi_{30} = \cos(\varphi \mp \hat{M}) \\ \sin \varphi_{30} = \sin(\varphi \mp \hat{M}) \end{cases} \quad (37)$$

$$\varphi_{30} = \varphi \mp \hat{M} \quad (38)$$

Results: Determination of Speeds and Accelerations

Velocities

From the system (2), only the relations (39) required in the study of velocities at the reverse kinematics are retained. It starts from the relationship that links the cosine of the angle to the sides of the triangle, a relationship that is time dependent and thus the simpler written value (relations 40) is obtained:

$$\begin{cases} \dot{\varphi} = \frac{\dot{y}_M \cdot \cos \varphi - \dot{x}_M \cdot \sin \varphi}{d} \\ \dot{d} = \frac{x_M \cdot \dot{x}_M + y_M \cdot \dot{y}_M}{d} \end{cases} \quad (39)$$

$$\begin{cases} 2 \cdot d_2 \cdot d \cdot \cos O_2 = d_2^2 - d_3^2 + d^2 \\ 2 \cdot d_2 \cdot \dot{d} \cdot \cos O_2 - 2 \cdot d_2 \cdot d \cdot \sin O_2 \cdot \dot{O}_2 = 2 \cdot d \cdot \dot{d} \\ \Rightarrow \dot{O}_2 = \frac{d_2 \cdot \dot{d} \cdot \cos O_2 - d \cdot \dot{d}}{d_2 \cdot d \cdot \sin O_2} \end{cases} \quad (40)$$

The relationship (24) is derived and the angular velocity $\omega_{20} \equiv \dot{\varphi}_{20}$ (relationship 41) is obtained:

$$\varphi_{20} = \varphi \pm \hat{O}_2 \quad (24)$$

$$\omega_{20} \equiv \dot{\varphi}_{20} = \dot{\varphi} \pm \dot{O}_2 \quad (41)$$

To determine ω_{20} (relation 41) we need $\dot{\varphi}$ to be computed from (39) and \dot{O}_2 determined by (40). In turn \dot{O}_2 it requires \dot{d} for its calculation, which is also calculated from the system (39):

Input speeds \dot{x}_M and \dot{y}_M are known, are imposed as inputs, or are conveniently chosen, or can be calculated on the basis of imposed criteria.

Similarly, the angular velocity $\omega_{30} \equiv \dot{\varphi}_{30}$ is determined (42):

$$\begin{cases} 2 \cdot d_3 \cdot d \cdot \cos M = d_3^2 - d_2^2 + d^2 \\ 2 \cdot d_3 \cdot \dot{d} \cdot \cos M - 2 \cdot d_3 \cdot d \cdot \sin M \cdot \dot{M} = 2 \cdot d \cdot \dot{d} \\ \Rightarrow \dot{M} = \frac{d_3 \cdot \dot{d} \cdot \cos M - d \cdot \dot{d}}{d_3 \cdot d \cdot \sin M} \end{cases} \quad (42)$$

The relationship (38) is derived to obtain the angular velocity $\omega_{30} \equiv \dot{\varphi}_{30}$, (expression 43). $\dot{\varphi}$ is calculated with the already known expression in the system (39) and \dot{M} it is determined from the system (42) and with the help of the system (39) which determines also and \dot{d} :

$$\varphi_{30} = \varphi \mp \hat{M} \quad (38)$$

$$\omega_{30} \equiv \dot{\varphi}_{30} = \dot{\varphi} \mp \dot{M} \quad (43)$$

Accelerations

Derive (39) and we obtain the necessary relations (44) in the study of the accelerations in the inverse kinematics. The relation in the system (40) is derived a second time with the time and the system (45) is obtained:

$$\begin{cases} \ddot{\varphi} = \frac{\ddot{y}_M \cdot \cos \varphi - \ddot{x}_M \cdot \sin \varphi - \dot{y}_M \cdot \sin \varphi \cdot \dot{\varphi} - \dot{x}_M \cdot \cos \varphi \cdot \dot{\varphi} - \dot{d} \cdot \dot{\varphi}}{d} \\ \ddot{d} = \frac{\dot{x}_M^2 + x_M \cdot \ddot{x}_M + \dot{y}_M^2 + y_M \cdot \ddot{y}_M - \dot{d}^2}{d} \end{cases} \quad (44)$$

$$\begin{cases} 2 \cdot d_2 \cdot d \cdot \cos O_2 = d_2^2 - d_3^2 + d^2 \\ 2 \cdot d_2 \cdot \dot{d} \cdot \cos O_2 - 2 \cdot d_2 \cdot d \cdot \sin O_2 \cdot \dot{O}_2 = 2 \cdot d \cdot \dot{d} \\ \Rightarrow d_2 \cdot d \cdot \sin O_2 \cdot \dot{O}_2 = d_2 \cdot \dot{d} \cdot \cos O_2 - d \cdot \dot{d} \\ \ddot{O}_2 = \frac{\ddot{d} d_2 \cos O_2 - \ddot{d} d - 2 \dot{d} \dot{d}_2 \sin O_2 \cdot \dot{O}_2 - d \dot{d}_2 \cos O_2 \cdot \dot{O}_2^2 - \dot{d}^2}{d_2 \cdot d \cdot \sin O_2} \end{cases} \quad (45)$$

Then the expression (41) is derived and the relation (46) generating the absolute angular acceleration $\varepsilon_2 \equiv \varepsilon_{20}$, which is calculated with $\ddot{\varphi}$ the output from the system (44) and with \ddot{O}_2 extracted from the system (45) and for \ddot{O}_2 to be obtained it is also necessary \ddot{d} determined also from (44):

$$\omega_{20} \equiv \dot{\varphi}_{20} = \dot{\varphi} \pm \dot{O}_2 \quad (41)$$

$$\varepsilon_2 \equiv \varepsilon_{20} = \dot{\omega}_{20} \equiv \ddot{\varphi}_{20} = \ddot{\varphi} \pm \ddot{O}_2 \quad (46)$$

The second time is now derived (42) and the system (47) is obtained:

$$\begin{cases} 2 \cdot d_3 \cdot d \cdot \cos M = d_3^2 - d_2^2 + d^2 \\ 2 \cdot d_3 \cdot \dot{d} \cdot \cos M - 2 \cdot d_3 \cdot d \cdot \sin M \cdot \dot{M} = 2 \cdot d \cdot \dot{d} \\ \Rightarrow d_3 \cdot d \cdot \sin M \cdot \dot{M} = d_3 \cdot \dot{d} \cdot \cos M - d \cdot \dot{d} \\ \ddot{M} = \frac{\ddot{d} d_3 \cos M - \ddot{d} d - 2 \dot{d} \dot{d}_3 \sin M \cdot \dot{M} - d \dot{d}_3 \cos M \cdot \dot{M}^2 - \dot{d}^2}{d_3 \cdot d \cdot \sin M} \end{cases} \quad (47)$$

The relationship (43) is again obtained with time and the expression (48) of the absolute angular acceleration $\varepsilon_3 \equiv \varepsilon_{30}$ which is determined with $\ddot{\varphi}$ and \ddot{M} .

$\ddot{\varphi}$ it is determined from the system (44) and \ddot{M} withdrawn from the system (47) and needs and the \ddot{d} which is extracted from the system (44):

$$\omega_{30} \equiv \dot{\varphi}_{30} = \dot{\varphi} \mp \dot{M} \quad (43)$$

$$\varepsilon_3 \equiv \varepsilon_{30} = \dot{\omega}_{30} \equiv \ddot{\varphi}_{30} = \ddot{\varphi} \mp \ddot{M} \quad (48)$$

Discussion

Robots have penetrated today in almost all industrial fields, being much more precise than humans in the execution of operations, but also faster, more dynamic, more stable and more resilient, working 24 h of the 24 h possible, in any season, breaks, holidays, vacations and especially without getting sick. The most important fact

is that they can also perform special operations that man can't do. So, for example, they can work in toxic, contaminated, mined, dangerous, or airless environments (in the cosmos, under water or underground), they can also position the parts very precisely so they can be used for fine, special processing at high precision operations, excellent mechanical processing, exceptional medical operations and even in all medical operations today, helping the doctor manage the patient's surgery with amazing precision, especially when it comes to open heart, brain, kidneys, liver, etc. Robots should not be fed and yet they can have an extremely long life. They can help us conquer both the underwater spaces and the cosmic spaces. Robots have stunning work precision and a faster execution speed than a man. In addition, their very precise positioning makes robot operations a great advantage, which can no longer be neglected. In repetitive and tiring work they are irreplaceable. The most commonly used anthropomorphic robotic mechatronic systems, which are currently being used, have been studied by eliminating the heavy, matrix 3D spatial system, the study being simplified in a plan by considering the main work plan of the system and the plan, the rotation required to restore the spatial parameters of the anthropomorphic 3D system. In other words, we can greatly ease the work of the anthropomorphic robot engineer by moving from 3D systems to a 2D system. In this study we will study the inverse kinematics of the plan system, 2D, as the most important one. In general, end effector positions are known (required) and the positions of the 2D module elements and the necessary rotations of the actuators for their creation must be determined. In the kinematics we know the kinematic parameters x_M and y_M , which represent the scaled coordinates of the point M (endeffector M) and must be determined by analytical calculations the parameters φ_{20} and φ_{30} .

Conclusion

The most commonly used anthropomorphic robotic mechatronic systems, which are currently being used, have been studied by eliminating the heavy, matrix 3D spatial system, the study being simplified in a plan by considering the main work plan of the system and the plan, the rotation required to restore the spatial parameters of the anthropomorphic 3D system. In other words, we can greatly ease the work of the anthropomorphic robot engineer by moving from 3D systems to a 2D system. In this study we will study the inverse kinematics of the plan system, 2D, as the most important one. In general, end effector positions are known (required) and the positions of the 2D module elements and the necessary rotations of the actuators for

their creation must be determined. In the kinematics we know the kinematic parameters x_M and y_M , which represent the scaled coordinates of the point M (endeffector M) and must be determined by analytical calculations the parameters φ_{20} and φ_{30} .

Acknowledgement

This text was acknowledged and appreciated by Dr. Veturia CHIROIU Honorific member of Technical Sciences Academy of Romania (ASTR) PhD supervisor in Mechanical Engineering.

Funding Information

Research contract: 1-Research contract: Contract number 36-5-4D/1986 from 24IV1985, beneficiary CNST RO (Romanian National Center for Science and Technology) Improving dynamic mechanisms.

2-Contract research integration. 19-91-3 from 29.03.1991; Beneficiary: MIS; TOPIC: Research on designing mechanisms with bars, cams and gears, with application in industrial robots.

3-Contract research. GR 69/10.05.2007: NURC in 2762; theme 8: Dynamic analysis of mechanisms and manipulators with bars and gears.

4-Labor contract, no. 35/22.01.2013, the UPB, "Stand for reading performance parameters of kinematics and dynamic mechanisms, using inductive and incremental encoders, to a Mitsubishi Mechatronic System" "PN-II-IN-CI-2012-1-0389".

All these matters are copyrighted! Copyrights: 394-qodGnhhtej, from 17-02-2010 13:42:18; 463-vpstuCGsiy, from 20-03-2010 12:45:30; 631-sqfsgqvutm, from 24-05-2010 16:15:22; 933-CrDztEfqow, from 07-01-2011 13:37:52.

Author's Contributions

This section should state the contributions made by each author in the preparation, development and publication of this manuscript.

Ethics

Authors should address any ethical issues that may arise after the publication of this manuscript.

References

- Aldana, N.D., C.L. Trujillo and J.G. Guarnizo, 2013. Active and reactive power flow regulation for a grid connected vsc based on fuzzy controllers. Rev. Facultad Ingeniería, 66: 118-130.
- Antonescu, P., 2003. Mecanisms. Printech, București.
- Antonescu, P., 1993. Synthesis of manipulators. Lito UPB, București.

- Antonescu, P. and M. Mitrache, 1989. Contributions to the synthesis of the mechanisms used as windscreen wipers. Bucharest, 4: 23-32.
- Autorenkollektiv, 1968. Getriebetechnik-VEB. Verlag Technik, Berlin.
- Aversa, R., R.V.V. Petrescu, A. Apicella and F.I.T. Petrescu, 2017a. Nano-diamond hybrid materials for structural biomedical application. *Am. J. Biochem. Biotechnol.*, 13: 34-41.
DOI: 10.3844/ajbbsp.2017.34.41
- Aversa, R., R.V. Petrescu, B. Akash, R.B. Bucinell and J.M. Corchado *et al.*, 2017b. Kinematics and forces to a new model forging manipulator. *Am. J. Applied Sci.*, 14: 60-80. DOI: 10.3844/ajassp.2017.60.80
- Aversa, R., R.V. Petrescu, A. Apicella, I.T.F. Petrescu and J.K. Calautit *et al.*, 2017c. Something about the V engines design. *Am. J. Applied Sci.*, 14: 34-52.
DOI: 10.3844/ajassp.2017.34.52
- Aversa, R., D. Parcesepe, R.V.V. Petrescu, F. Berto and G. Chen *et al.*, 2017d. Process ability of bulk metallic glasses. *Am. J. Applied Sci.*, 14: 294-301.
DOI: 10.3844/ajassp.2017.294.301
- Aversa, R., R.V.V. Petrescu, B. Akash, R.B. Bucinell and J.M. Corchado *et al.*, 2017e. Something about the balancing of thermal motors. *Am. J. Eng. Applied Sci.*, 10: 200.217. DOI: 10.3844/ajeassp.2017.200.217
- Aversa, R., F.I.T. Petrescu, R.V. Petrescu and A. Apicella, 2016a. Biomimetic FEA bone modeling for customized hybrid biological prostheses development. *Am. J. Applied Sci.*, 13: 1060-1067.
DOI: 10.3844/ajassp.2016.1060.1067
- Aversa, R., D. Parcesepe, R.V. Petrescu, G. Chen and F.I.T. Petrescu *et al.*, 2016b. Glassy amorphous metal injection molded induced morphological defects. *Am. J. Applied Sci.*, 13: 1476-1482.
DOI: 10.3844/ajassp.2016.1476.1482
- Aversa, R., R.V. Petrescu, F.I.T. Petrescu and A. Apicella, 2016c. Smart-factory: Optimization and process control of composite centrifuged pipes. *Am. J. Applied Sci.*, 13: 1330-1341.
DOI: 10.3844/ajassp.2016.1330.1341
- Aversa, R., F. Tamburrino, R.V. Petrescu, F.I.T. Petrescu and M. Artur *et al.*, 2016d. Biomechanically inspired shape memory effect machines driven by muscle like acting NiTi alloys. *Am. J. Applied Sci.*, 13: 1264-1271.
DOI: 10.3844/ajassp.2016.1264.1271
- Aversa, R., E.M. Buzea, R.V. Petrescu, A. Apicella and M. Neacsu *et al.*, 2016e. Present a mechatronic system having able to determine the concentration of carotenoids. *Am. J. Eng. Applied Sci.*, 9: 1106-1111.
DOI: 10.3844/ajeassp.2016.1106.1111
- Aversa, R., R.V. Petrescu, R. Sorrentino, F.I.T. Petrescu and A. Apicella, 2016f. Hybrid ceramo-polymeric nanocomposite for biomimetic scaffolds design and preparation. *Am. J. Eng. Applied Sci.*, 9: 1096-1105.
DOI: 10.3844/ajeassp.2016.1096.1105
- Aversa, R., V. Perrotta, R.V. Petrescu, C. Misiano and F.I.T. Petrescu *et al.*, 2016g. From structural colors to super-hydrophobicity and achromatic transparent protective coatings: Ion plating plasma assisted TiO₂ and SiO₂ Nano-film deposition. *Am. J. Eng. Applied Sci.*, 9: 1037-1045.
DOI: 10.3844/ajeassp.2016.1037.1045
- Aversa, R., R.V. Petrescu, F.I.T. Petrescu and A. Apicella, 2016h. Biomimetic and evolutionary design driven innovation in sustainable products development. *Am. J. Eng. Applied Sci.*, 9: 1027-1036.
DOI: 10.3844/ajeassp.2016.1027.1036
- Aversa, R., R.V. Petrescu, A. Apicella and F.I.T. Petrescu, 2016i. Mitochondria are naturally micro robots-a review. *Am. J. Eng. Applied Sci.*, 9: 991-1002.
DOI: 10.3844/ajeassp.2016.991.1002
- Aversa, R., R.V. Petrescu, A. Apicella and F.I.T. Petrescu, 2016j. We are addicted to vitamins C and E-A review. *Am. J. Eng. Applied Sci.*, 9: 1003-1018.
DOI: 10.3844/ajeassp.2016.1003.1018
- Aversa, R., R.V. Petrescu, A. Apicella and F.I.T. Petrescu, 2016k. Physiologic human fluids and swelling behavior of hydrophilic biocompatible hybrid ceramo-polymeric materials. *Am. J. Eng. Applied Sci.*, 9: 962-972.
DOI: 10.3844/ajeassp.2016.962.972
- Aversa, R., R.V. Petrescu, A. Apicella and F.I.T. Petrescu, 2016l. One can slow down the aging through antioxidants. *Am. J. Eng. Applied Sci.*, 9: 1112-1126.
DOI: 10.3844/ajeassp.2016.1112.1126
- Aversa, R., R.V. Petrescu, A. Apicella and F.I.T. Petrescu, 2016m. About homeopathy or «Similia similibus curentur». *Am. J. Eng. Applied Sci.*, 9: 1164-1172.
DOI: 10.3844/ajeassp.2016.1164.1172
- Aversa, R., R.V. Petrescu, A. Apicella and F.I.T. Petrescu, 2016n. The basic elements of life's. *Am. J. Eng. Applied Sci.*, 9: 1189-1197.
DOI: 10.3844/ajeassp.2016.1189.1197
- Aversa, R., F.I.T. Petrescu, R.V. Petrescu and A. Apicella, 2016o. Flexible stem trabecular prostheses. *Am. J. Eng. Applied Sci.*, 9: 1213-1221.
DOI: 10.3844/ajeassp.2016.1213.1221
- Braune, R., 2000. Bewegungsdesign: Eine kernkompetenz des getriebe technikers. VDI-Berichte Nr. 1567, VDI – Verlag, Dusseldorf.
- Bruja, A. and M. Dima, 2001. Synthesis of kinematics of harmonics reducers with rigid front element. Proceedings of the 6th Simpson Nat. of Construction Machinery, (NCM' 01), pp: 53-59.

- Buda, L. and C. Mateucă, 1989. Functional, cinematic and cinetostatic analysis of the lifting mechanism of the passenger carriages. Bucharest.
- Cao, W., H. Ding, Z. Bin and C. Ziming, 2013. New structural representation and digital-analysis platform for symmetrical parallel mechanisms. *Int. J. Adv. Robotic Sys.* DOI: 10.5772/56380
- Dong, H., N. Giakoumidis, N. Figueroa and N. Mavridis, 2013. Approaching behaviour monitor and vibration indication in developing a General Moving Object Alarm System (GMOAS). *Int. J. Adv. Robotic Sys.* DOI: 10.5772/56586
- Dudita, F.L., 1989. Articulated, inventive, cinematic mechanisms. Technical Publishing House, Bucharest.
- Garcia, E., M.A. Jimenez, P.G. De Santos and M. Armada, 2007. The evolution of robotics research. *IEEE Robot. Automat. Magaz.*, 14: 90-103. DOI: 10.1109/MRA.2007.339608
- Garcia-Murillo, M., J. Gallardo-Alvarado and E. Castillo-Castaneda, 2013. Finding the generalized forces of a series-parallel manipulator. *IJARS.* DOI: 10.5772/53824
- He, B., Z. Wang, Q. Li, H. Xie and R. Shen, 2013. An analytic method for the kinematics and dynamics of a multiple-backbone continuum robot. *IJARS.* DOI: 10.5772/54051
- Kojevnikov, S.N., 1969. Teoria mehanizmov i mašin. Izd. Mašinostroenie, Moskva.
- Lederer, P., 1993. Dynamische synthese der übertragungsfunktion eines Kurvengetriebes. *Mech. Mach. Theory*, 28: 23-29.
- Lee, B.J., 2013. Geometrical derivation of differential kinematics to calibrate model parameters of flexible manipulator. *Int. J. Adv. Robotic Sys.* DOI: 10.5772/55592
- Lichtenheldt, W., 1995. Konstruktionslehre der Getriebe. Akademie – Verlag Berlin, 1970.
- Lin, S., 1999. Getriebesynthese nach unscharfen Lagenvorgaben durch Positionierung eines vorbestimmten Getriebes. *Fortschritt, Berichte VDI, Reihe 1, Nr. 313*, VDI – Verlage, Dusseldorf.
- Lin, W., B. Li, X. Yang and D. Zhang, 2013. Modelling and control of inverse dynamics for a 5-DOF parallel kinematic polishing machine. *Int. J. Adv. Robotic Sys.* DOI: 10.5772/54966
- Liu, H., W. Zhou, X. Lai and S. Zhu, 2013. An efficient inverse kinematic algorithm for a PUMA560-structured robot manipulator. *IJARS.* DOI: 10.5772/56403
- Luck, K. and K.H. Modler, 1995. *Getriebetechnik: Analyse, Synthese, Optimierung*. 2nd Edn., Springer, New York, ISBN-10: 3540570012, pp: 367.
- Manolescu, N.I., 1968. Problems of machine theory and machines. E.D.P., Bucharest.
- Margine, A.L., 1999. Contributions to the geometric-kinematical and dynamic synthesis of planetary gears with cylindrical gears. PhD Thesis, U.P.B.
- Maros, D., 1958. Gear wheel kinematic. Technical Publishing House, Bucharest.
- Flavio de Melo, L., S.F. Reis Alves and J.M. Rosário, 2012. Mobile robot navigation modelling, control and applications. *Int. Rev. Modell. Simulat.*, 5: 1059-1068.
- Mirsayar, M.M., V.A. Joneidi, R.V.V. Petrescu, F.I.T. Petrescu and F. Berto, 2017. Extended MTSN criterion for fracture analysis of soda lime glass. *Eng. Fracture Mechan.*, 178: 50-59. DOI: 10.1016/j.engfracmech.2017.04.018
- Modler, K.H. and C. Wadewitz, 2001. Synthese von raderkoppelgetriebe als vorschaltgetriebe mit definierter ungleichformigkeit. *Wissenschaftliche Zeitschrift*, 3: 101-106.
- Modler, K.H. and C. Wadewitz, 1998. Trepte, U., Rechnergestützte Synthese von Raderkoppelgetrieben als Vorschaltgetriebe zur Erzeugung nichtlinearer Antriebsbewegungen. Bericht zum DFG – Vorhaben Mo 537/5 – 1. TU Dresden.
- Modler, K.H., 1979. Reakisierung von pilgerschritten durch zweiraderkoppel-getriebe. *Dynamik und Getriebetechnik.*
- Neumann, R., 1979. Einstellbare Raderkoppelgetriebe. *Dynamik und Getriebe-technik.*
- Neumann, R., 2001. Dreiraderkoppel: Schrittgetriebe mit zahnradern oder zahnriemen. București.
- Niemeyer, J., 2000. Das IGM – Getriebelexikon – Wissensverarbeitung in der Getriebetechnik mit Hilfe der Internet – Technologie. In: *IMG – Kolloquium Getriebetechnik 2000*, Dittrich, G. (Hrsg.), Forschung und Lehre 1972-2000, Mainz, Aachen, pp: 53-66.
- Padula, F. and V. Perdureau, 2013. An on-line path planner for industrial manipulators. *Int. J. Adv. Robotic Sys.* DOI: 10.5772/55063
- Perumaal, S. and N. Jawahar, 2013. Automated trajectory planner of industrial robot for pick-and-place task. *IJARS.* DOI: 10.5772/53940
- Petrescu, F.I.T., 2016. *Valorisation of Romanian-Romanian Engineering Tradition*. 1st Edn., Create Space Publisher, USA, ISBN-13: 9781537177984.
- Petrescu, F.I.T., 2014. *Sisteme Mecatronice Seriale, Paralele si Mixte*. 1st Edn., Create Space Publisher, ISBN-13: 978-1495923814, pp: 224.
- Petrescu, F.I. and R.V. Petrescu, 2011a. *Memories about Flight*. 1st Edn., CreateSpace, pp: 652.
- Petrescu, F.I. and R.V. Petrescu, 2011b. *Mechanical Systems, Serial and Parallel – Course (in romanian)*. 1st Edn., LULU Publisher, London, UK, ISBN 978-1-4466-0039-9, pp: 124.

- Petrescu, F.I.T. and R.V. Petrescu, 2011c. Planetary Trains (Romanian Edition). 1st Edn., CreateSpace, USA, ISBN-13: 978-1468030419, pp: 204.
- Petrescu, F.I. and R.V. Petrescu, 2011d. Dynamics of Distribution Mechanisms. 1st Edn., Create Space Publisher, USA, ISBN-13: 978-1-4680-5265-7, pp: 188.
- Petrescu, R.V. and F.I.T. Petrescu, 2012a. Northrop. 1st Edn., Books on Demand, ISBN-13: 978-3848209323, pp: 142.
- Petrescu, F.I. and R.V. Petrescu, 2012b. New Aircraft II. 1st Edn., Books on Demand, pp: 138.
- Petrescu, F.I. and R.V. Petrescu, 2012c. Mecatronica-Sisteme Seriale si Paralele. 1st Edn., Create Space Publisher, USA, ISBN-13: 978-1-4750-6613-5, pp: 128.
- Petrescu, F.I. and R.V. Petrescu, 2012d. Kinematics of the planar quadrilateral mechanism. *Engevista*, 14: 345-348. DOI: 10.22409/engevista.v14i3.377
- Petrescu, R.V. and F.I. Petrescu, 2013a. Lockheed Martin. 1st Edn., CreateSpace, pp: 114.
- Petrescu, R.V. and F.I. Petrescu, 2013b. Northrop. 1st Edn., CreateSpace, pp: 96.
- Petrescu, R.V. and F.I. Petrescu, 2013c. The Aviation History or New Aircraft I Color. 1st Edn., CreateSpace, pp: 292.
- Petrescu, F.I. and R.V. Petrescu, 2013d. Cinematics of the 3R dyad. *Engevista*, 15: 118-124.
- Petrescu, F.I. and R.V. Petrescu, 2016a. Parallel moving mechanical systems kinematics. *ENGEVISTA*, 18: 455-491.
- Petrescu, F.I. and R.V. Petrescu, 2016b. Direct and inverse kinematics to the anthropomorphic robots. *ENGEVISTA*, 18: 109-124.
- Petrescu, F.I. and R.V. Petrescu, 2016c. Dynamic cinematic to a structure 2R. *Revista Geintec-Gestao Inovacao E Tecnologias*, 6: 3143-3154.
- Petrescu, F.I.T. and J.K. Calautit, 2016a. About Nano fusion and dynamic fusion. *Am. J. Applied Sci.*, 13: 261-266. DOI: 10.3844/ajassp.2016.261.266
- Petrescu, F.I. and J.K. Calautit, 2016b. About the light dimensions. *Am. J. Applied Sci.*, 13: 321-325. DOI: 10.3844/ajassp.2016.321.325
- Petrescu, F.I.T., 2009. New aircraft. Proceedings of the 3rd International Conference on Computational Mechanics, Oct. 29-30, Brasov, Romania.
- Petrescu, F.I.T., 2012a. Cold Nuclear Fusion. 1st Edn., Create Space, USA, ISBN-13: 1478234261/9781478234265, pp: 80.
- Petrescu, F.I.T., 2012b. Particle annihilation-a source of renewable energy?
- Petrescu, F.I.T., 2012c. Particle annihilation-a source of renewable energy? *Infinite Energy journal*.
- Petrescu, F.I., 2012d. Basis of Analysis and Optimization of Rigid Memory Systems - Course and Applications. 1st Edn., Create Space publisher, USA, ISBN-13: 978-1-4700-2436-9, pp: 164.
- Petrescu, F.I., 2012e. Theory of Mechanisms - Course and Applications. 2nd Edn., Create Space Publisher, USA, ISBN-13: 978-1-4792-9362-9, pp: 284.
- Petrescu, R.V.V., R. Aversa, A. Apicella, F. Berto and S. Li *et al.*, 2016a. Ecosphere protection through green energy. *Am. J. Applied Sci.*, 13: 1027-1032. DOI: 10.3844/ajassp.2016.1027.1032
- Petrescu, F.I.T., A. Apicella, R.V.V. Petrescu, S.P. Kozaitis and R.B. Bucinell *et al.*, 2016b. Environmental protection through nuclear energy. *Am. J. Applied Sci.*, 13: 941-946. DOI: 10.3844/ajassp.2016.941.946
- Petrescu, R.V., R. Aversa, B. Akash, R. Bucinell and J. Corchado *et al.*, 2017a. Modern propulsions for aerospace-a review. *J. Aircraft Spacecraft Technol.*, 1: 1-8. DOI: 10.3844/jastsp.2017.1.8
- Petrescu, R.V., R. Aversa, B. Akash, R. Bucinell and J. Corchado *et al.*, 2017b. Modern propulsions for aerospace-part II. *J. Aircraft Spacecraft Technol.*, 1: 9-17. DOI: 10.3844/jastsp.2017.9.17
- Petrescu, R.V., R. Aversa, B. Akash, R. Bucinell and J. Corchado *et al.*, 2017c. History of aviation-a short review. *J. Aircraft Spacecraft Technol.*, 1: 30-49. DOI: 10.3844/jastsp.2017.30.49
- Petrescu, R.V., R. Aversa, B. Akash, R. Bucinell and J. Corchado *et al.*, 2017d. Lockheed martin-a short review. *J. Aircraft Spacecraft Technol.*, 1: 50-68. DOI: 10.3844/jastsp.2017.50.68
- Petrescu, R.V., R. Aversa, B. Akash, J. Corchado and F. Berto *et al.*, 2017e. Our universe. *J. Aircraft Spacecraft Technol.*, 1: 69-79. DOI: 10.3844/jastsp.2017.69.79
- Petrescu, R.V., R. Aversa, B. Akash, J. Corchado and F. Berto *et al.*, 2017f. What is a UFO? *J. Aircraft Spacecraft Technol.*, 1: 80-90. DOI: 10.3844/jastsp.2017.80.90
- Petrescu, R.V., R. Aversa, B. Akash, J. Corchado and F. Berto *et al.*, 2017g. About bell helicopter FCX-001 concept aircraft-a short review. *J. Aircraft Spacecraft Technol.*, 1: 91-96. DOI: 10.3844/jastsp.2017.91.96
- Petrescu, R.V., R. Aversa, B. Akash, J. Corchado and F. Berto *et al.*, 2017h. Home at airbus. *J. Aircraft Spacecraft Technol.*, 1: 97-118. DOI: 10.3844/jastsp.2017.97.118
- Petrescu, R.V., R. Aversa, B. Akash, J. Corchado and F. Berto *et al.*, 2017i. Airlander. *J. Aircraft Spacecraft Technol.*, 1: 119-148. DOI: 10.3844/jastsp.2017.119.148

- Petrescu, R.V., R. Aversa, B. Akash, J. Corchado and F. Berto *et al.*, 2017j. When boeing is dreaming-a review. *J. Aircraft Spacecraft Technol.*, 1: 149-161. DOI: 10.3844/jastsp.2017.149.161
- Petrescu, R.V., R. Aversa, B. Akash, J. Corchado and F. Berto *et al.*, 2017k. About Northrop Grumman. *J. Aircraft Spacecraft Technol.*, 1: 162-185. DOI: 10.3844/jastsp.2017.162.185
- Petrescu, R.V., R. Aversa, B. Akash, J. Corchado and F. Berto *et al.*, 2017l. Some special aircraft. *J. Aircraft Spacecraft Technol.*, 1: 186-203. DOI: 10.3844/jastsp.2017.186.203
- Petrescu, R.V., R. Aversa, B. Akash, J. Corchado and F. Berto *et al.*, 2017m. About helicopters. *J. Aircraft Spacecraft Technol.*, 1: 204-223. DOI: 10.3844/jastsp.2017.204.223
- Petrescu, R.V., R. Aversa, B. Akash, F. Berto and A. Apicella *et al.*, 2017n. The modern flight. *J. Aircraft Spacecraft Technol.*
- Petrescu, R.V., R. Aversa, B. Akash, F. Berto and A. Apicella *et al.*, 2017o. Sustainable energy for aerospace vessels. *J. Aircraft Spacecraft Technol.*
- Petrescu, R.V., R. Aversa, B. Akash, F. Berto and A. Apicella *et al.*, 2017p. Unmanned helicopters. *J. Aircraft Spacecraft Technol.*
- Petrescu, R.V., R. Aversa, B. Akash, F. Berto and A. Apicella *et al.*, 2017q. Project HARP. *J. Aircraft Spacecraft Technol.*
- Petrescu, F.I., B. Grecu, A. Comanescu and R.V. Petrescu, 2009. Some mechanical design elements. *Proceeding of the International Conference on Computational Mechanics and Virtual Engineering, (MEC' 09), Braşov*, pp: 520-525.
- Popescu, I., 1977. Design of planar mechanisms. *Scrisul Românesc Publishing House of Craiova.*
- Reddy, P., K.V. Shihabudheen and J. Jacob, 2012. Precise non linear modeling of flexible link flexible joint manipulator. *IREMoS*, 5: 1368-1374.
- Rehwald, W. and K. Luck, 2000. Kosim – Koppelgetriebesimulation. *Fortschritt Berichte VDI, Reihe 1, Nr. 332.* VDI Verlag, Dusseldorf.
- Rehwald, W. and K. Luck, 2001. Betrachtungen zur zahl der koppelgetriebetypen. *Wissenschaftliche Zeitschrift der*, 50: 107-115.
- Stoica, I.A., 1977. Gear Wheel Interference. 1st Edn., DACIA Publishing House, Cluj-Napoca.
- Şaskin, A.G., 1971. Zubciato rîciajnîe mehanizmî. *Izd. Maşinostroenie, Moskva.*
- Şaskin, A.G., 1963. Sintezu zubciato-rîciajnîh mehanizmov s vâstoem. *Teoria Maşin I Mehanizmov*, 94-95: 88-110.
- Tabaković, S., M. Zeljković, R. Gatalo and A. Zeljković Živković, 2013. Program suite for conceptual designing of parallel mechanism-based robots and machine tools. *Int. J. Adv. Robotic Sys.* DOI: 10.5772/56633
- Tang, X., D. Sun and Z. Shao, 2013. The structure and dimensional design of a reconfigurable PKM. *IJARS.* DOI: 10.5772/54696
- Tong, G., J. Gu and W. Xie, 2013. Virtual entity-based rapid prototype for design and simulation of humanoid robots. *Int. J. Adv. Robotic Sys.* DOI: 10.5772/55936
- Tutunaru, D., 1969. Rectangular and Inverse Planar Mechanisms. 1st Edn., Technical Publishing House, Bucharest.
- Wang, K., M. Luo, T. Mei, J. Zhao and Y. Cao, 2013. Dynamics analysis of a three-DOF planar serial-parallel mechanism for active dynamic balancing with respect to a given trajectory. *Int. J. Adv. Robotic Sys.* DOI: 10.5772/54201

Source of Figures

Petrescu, 2014.