

The Mathematical Model of Power System with Thyristor Controlled Series Capacitor in Long Transmission Line

Prechanon Kumkratug

Department of Electrical Engineering, Faculty of Engineering at Si Racha,
Kasetsart University, 199 M.6, Tungsukhla, Si Racha, Chonburi, 20230, Thailand

Abstract: Problem statement: It is becoming increasingly important to fully utilize the existing transmission system assets due to environmental legislation, rights-of-way issues and costs of construction and deregulation policies that introduced in recent years. The Thyristor Controlled Series Capacitor (TCSC) has been proposed for the better control power flow and dynamic performance. The exact long transmission line model consists of the resistance and reactance. Most of previous researches studies transient stability performance of the TCSC in SMIB System with neglecting the resistance of the line. Thus the fully capability of the TCSC on transient stability improvement of power system may not be applied. The consideration of the resistance causes in the difficulty of deriving the mathematical model. **Approach:** This study investigates the effect of the TCSC on transient stability of the power system with consideration the exact long transmission line mode. The concept of two-port network is applied to simplify the mathematical model of the power system. The proposed method is tested on sample system and compared on various cases. **Results:** The first swing of rotor angle curve of the faulted system without resistance is obviously higher than that of with resistance whereas the second swing of the faulted system without resistance is slightly less than that of with resistance. The system with a TCSC can improve transient stability of power system. **Conclusion:** It was found from this study that the TCSC and resistance of the line can improve first swing of rotor angle. However, the resistance of the line provides the negative effect on second swing of rotor angle. The simulation results indicate that for practical long line, the resistance is very important parameters for evaluating transient stability of power system.

Key words: Power system stability, transient stability, critical clearing time, FACTS devices, resistance, capacitance, transmission line, medium transmission line, two ports network

INTRODUCTION

Nowadays, the demand of electricity has dramatically increased and a modern power system becomes a complex network of transmission lines interconnecting the generating stations to the major loads points in the overall power system in order to support the high demand of consumers. It is becoming increasingly important to fully utilize the existing transmission system assets due to environmental legislation, rights-of-way issues and costs of construction and deregulation policies that introduced in recent years. A number of Flexible AC Transmission System (FACTS) controllers, based on the rapid development of power electronics technology, have been proposed for better utilization of the existing transmission systems (Samikannu, R. and Poonamallie, 2011; Nabhan and Abdallah, 2010; Padma and Rajaram, 2011; Osuwa and Igwiro, 2010; Subramani *et al.*, 2012; Zarate-Minano *et al.*, 2010).

The Thyristor Controlled Series Capacitor (TCSC) is the series FACTS devices. It consists of the capacitor bank reactor bank and thyristor as shown in Fig. 1. The thyristors control the reactance that dictates the power flow through a line. The TCSC can be applied for improving transient stability of power system.

The evaluation of Critical Clearing Time (CCT) of power system is one of the most important research areas for power engineers because it indicates the robustness of the faulted power system. The rotor angle of the synchronous generator determines the stability of power system. Although the stability of the synchronous machine is used to represent the stability of the power system, all of the power system components such as transmission line and transformer affect the stability of the power system.

The transmission line is one of the most important parts in power system components. Most of the fault occurs at the transmission line. It is generally divided into three major categories; short, medium and long model whose distance are about 80 km, above 80-250 km and above 250 km, respectively.

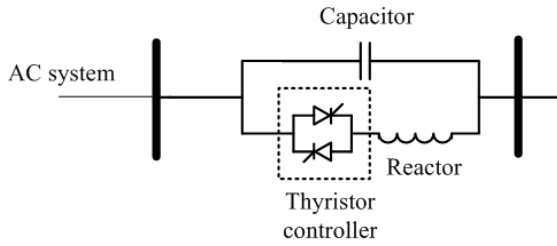


Fig. 1: Schematic diagram of TCSC

Many previous researches used simple transmission line model by neglecting its resistance or capacitance. To fully utilization the existing system, the exact transmission line should be further investigated.

This study will investigate the capability of the TCSC on transient stability of the SMIB system with the exact long transmission line model. The concept of two-port network is applied to simplify the mathematical model of the power system. The sample system consisting the practical long transmission line is used to investigate in this study. The proposed method is tested on various cases.

MATERIALS AND METHODS

Mathematical model: The transmission line is considered as long line when its distance is beyond 150 km. The basic model of long transmission line consists of the lump of medium transmission line model with serial models as shown in Fig. 2a. Its simpler model is represented by a model as shown in Fig. 2b.

The Z' and Y' are given in Eq. 1-2 and written by:

$$Z' = Z_c \sinh(\gamma) \tag{1}$$

$$Y' = 2 / Z_c \tanh(\gamma) \tag{2}$$

Here:

$$\gamma = \sqrt{ZY}$$

And:

$$Z_c = \sqrt{\frac{Z}{Y}}$$

Figure 3a shows the single line diagram of power system consisting of a generator, a transformer, four long transmission lines and TCSC. Figure 3b shows the equivalent of Fig. 3a. The generator is represented by a synchronous voltage in quadrature axis (E'_q) behind direct transient reactance (X'_d).

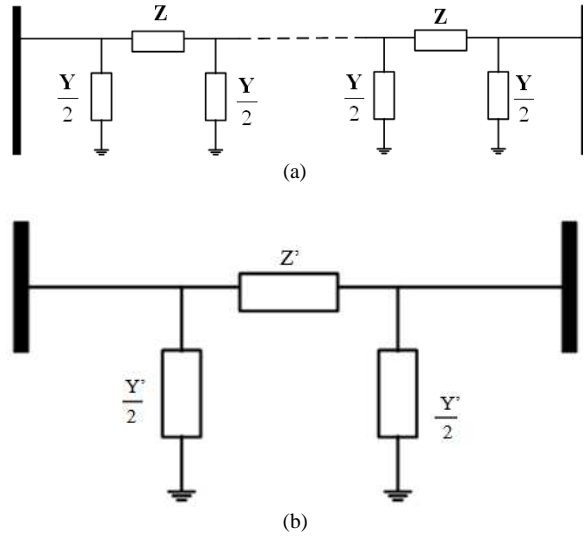


Fig. 2: Long transmission line model (a) Basic model with the serial π models (b) a π model

The V_b is the voltage at infinite bus. The exact long transmission line model is represented by the impedance (Z_L) which consists of a resistance (R_L) and reactance (X_L). The TCSC can be modeled as the variable series reactance (X_{TCSC}) as shown in Fig. 3b. This study will apply the concept of the two-port network to simplify the equivalent in Fig. 3b.

Each component of power system and a TCSC can be represented the matrix of two-port networks (A, B, C and D) as shown in Fig. 3c and given by Eq. 3-14:

$$A_1 = A_2 = A_{TCSC} = 1 \tag{3}$$

$$A_3 = A_4 = A_5 = A_6 = \cosh(\gamma) \tag{4}$$

$$B_1 = jX'_d \tag{5}$$

$$B_2 = jX_t \tag{6}$$

$$B_3 = B_4 = B_5 = B_6 = Z_c \sinh(\gamma) \tag{7}$$

$$B_{TCSC} = -jX_{TCSC} \tag{8}$$

$$C_1 = C_2 = 0 \tag{9}$$

$$C_3 = C_4 = C_5 = C_6 = \frac{1}{Z_c} \sinh(\gamma) \tag{10}$$

$$C_{TCSC} = 0 \tag{11}$$

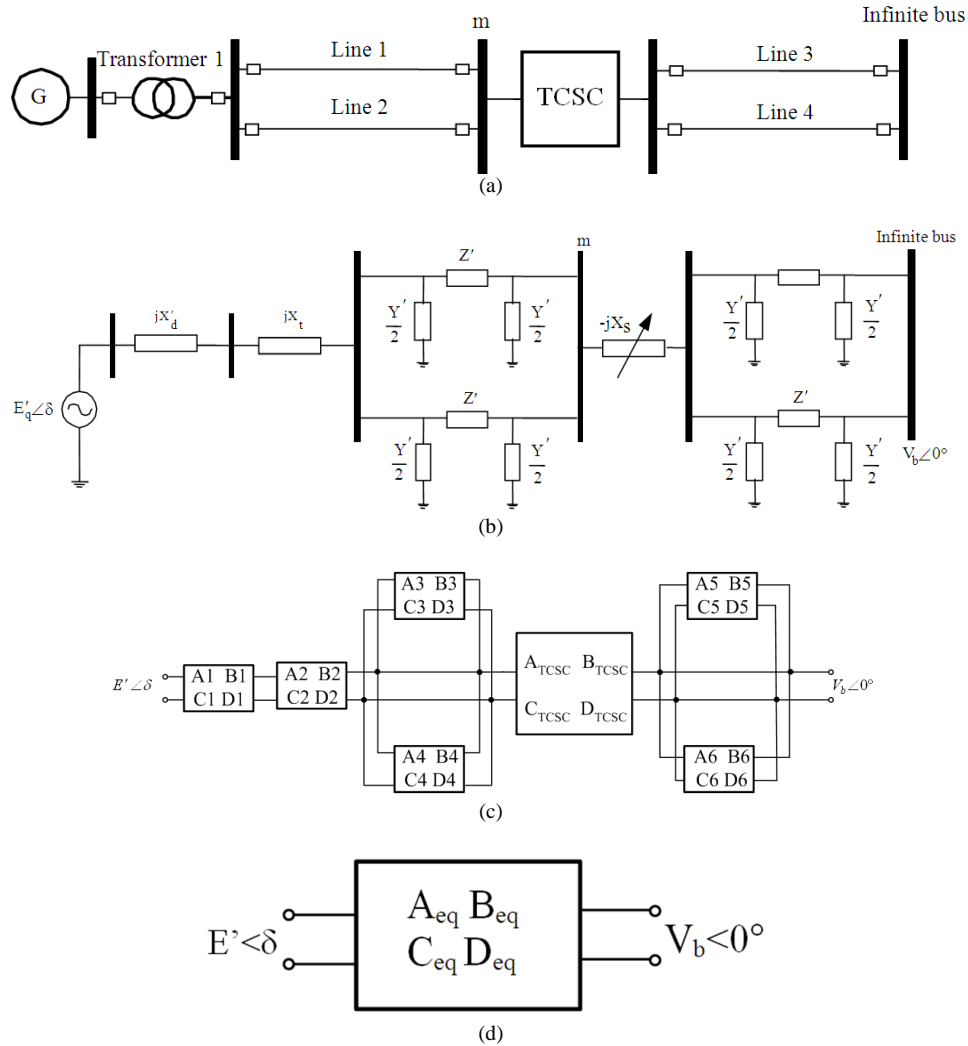


Fig. 3: Single machine infinite bus system with a TCSC (a) schematic diagram (b) equivalent circuit (c) two -port networks diagram (d) the net two-port network

$$\mathbf{D}_1 = \mathbf{D}_2 = 0 \tag{12} \quad \mathbf{B}_s = \mathbf{A}_1 \mathbf{B}_2 + \mathbf{B}_1 \mathbf{D}_2 \tag{16}$$

$$\mathbf{D}_3 = \mathbf{D}_4 = \mathbf{D}_5 = \mathbf{D}_6 = \cosh(\gamma) \tag{13} \quad \mathbf{C}_s = \mathbf{A}_2 \mathbf{C}_1 + \mathbf{C}_2 \mathbf{D}_1 \tag{17}$$

$$\mathbf{D}_{TCSC} = 1 \tag{14} \quad \mathbf{D}_s = \mathbf{B}_{s2} \mathbf{C}_{s1} + \mathbf{D}_{s1} \mathbf{D}_{s2} \tag{18}$$

It can be seen from the Fig. 3c that some ports are in series and in shunt connection. For example, a port 1 and port 2 are in series connection whereas port 3 and port 4 are in shunt connection. Thus with the series combination of port 1 and port 2, a new port is given by Eq. 15-18:

$$\mathbf{A}_s = \mathbf{A}_1 \mathbf{A}_2 + \mathbf{B}_1 \mathbf{C}_2 \tag{15} \quad \mathbf{C}_{sh} = \mathbf{C}_3 + \mathbf{C}_4 + (\mathbf{A}_3 - \mathbf{A}_4)(\mathbf{D}_4 - \mathbf{D}_3) / (\mathbf{B}_3 + \mathbf{B}_4) \tag{21}$$

Similarly, with the shunt combination of port 3 and port 4, a new port is given by Eq. 19-22:

$$\mathbf{A}_{sh} = (\mathbf{A}_3 \mathbf{B}_4 + \mathbf{A}_4 \mathbf{B}_3) / (\mathbf{B}_3 + \mathbf{B}_4) \tag{19}$$

$$\mathbf{B}_{sh} = \mathbf{B}_3 \mathbf{B}_4 / (\mathbf{B}_3 + \mathbf{B}_4) \tag{20}$$

$$D_{sh} = (B_4 D_3 + B_3 D_4) / (B_3 + B_4) \quad (22)$$

With the above concepts, the net two-port network diagram is shown in Fig. 3d. Here A_{eq} , B_{eq} , C_{eq} and D_{eq} are the element in net matrix of net two-port networks.

The output electrical power of synchronous machine (P_e) is given by Eq. 23:

$$P_e = \frac{A_{eq} (E'_q)^2}{B_{eq}} \cos(\theta_{Beq} - \theta_{Aeq}) - \frac{V_b E'_q}{B_{eq}} \cos(\theta_{Beq} + \delta) \quad (23)$$

Here:

$$A_{eq} = A_{eq} \angle \theta_{Aeq} \quad B_{eq} = B_{eq} \angle \theta_{Beq}$$

The dynamic equation for evaluating critical clearing time of the system in Fig. 3a is given by:

$$\dot{\delta} = \omega \quad (24)$$

$$\dot{\omega} = \frac{1}{M} [P_m - P_e] \quad (25)$$

Here, δ , ω and P_m as given in Eq. 24-25 are the rotor angle, speed, mechanical input power and moment of inertia, respectively of synchronous machine. The P_e is the output electrical power of synchronous as given in Eq. 23.

It can be mentioned here that the variable series reactance of the TCSC as given in Eq. 8 is changed during the dynamic state for improve the transient stability. This study uses the linear control given by:

$$X_{TCSC} = K\omega \quad (26)$$

Here K in Eq. 26 is the constant gain control.

RESULTS

The proposed method is tested on the sample system Consider the diagram of sample system is shown in Fig. 2a. The system data are:

Generator: H=5, $X_t = 0.1$ pu, $X'd = 0.20$ pu, $E'_q = 1.22 < 31.64$ pu.

Transmission line data: Voltage level 500 kV, 300 km, $f = 50$ Hz, $R = 0.016 \Omega/\text{km}$, $L = 0.97$ mH/km, $C = 0.0115 \mu\text{f}/\text{km}$

The series Z' and the shunt admittance Y' of the long line at fundamental frequency are $4.6426 + j89.92$ and $0 + j0.00109$, respectively.

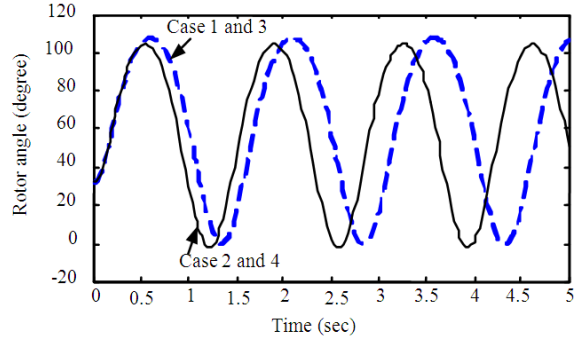


Fig. 4: Swing curve of the system without FACTS devices for tcl = 170 m sec

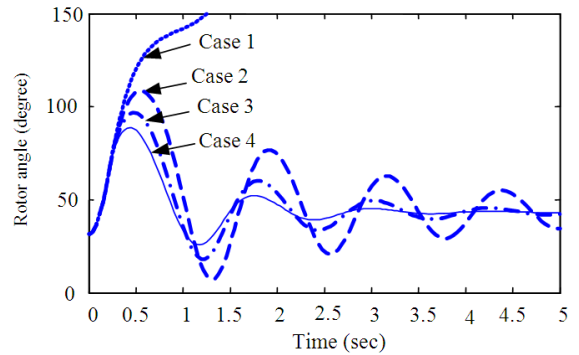


Fig. 5: Rotor angle of the system with various gains of a TCSC for tcl = 190 m sec

Table 1: The maximum and minimum rotor angle of the system without TCSC for tcl=170 m sec

Case	R	Bc	δ_{max} (degree)	δ_{min} (degree)
1	0.0000	0.000000	94.62	13.07
2	0.0263	0.000000	93.64	12.68
3	0.0000	0.000594	94.62	13.07
4	0.0263	0.000594	93.64	12.68

The percentage of R/X and B_c/X of the line are = 5.26% and $B_c/X = 0.001188\%$, respectively. With the given reactance of the line (X) = 0.5 pu, the per unit of R and B_c are 0.0263 and 0.00059 pu, respective.

It is considered that three phase fault appears at line 2 near bus m and the fault is cleared by opening circuit breakers at the end of the line. Figure 4 shows the rotor angle of the system without a TCSC ($K = 0$) for the clearing time of fault (t_{cl}) 170 m sec. Table 1 summarizes the maximum and minimum rotor angles (δ_{max} , δ_{min}) of Fig. 3.

Figure 5 shows the rotor angle of the system with various gains of a TCSC and with consideration of the exact long transmission line model. Here the t_{cl} is increased to 198 m sec. Table 2 summarizes the maximum and minimum rotor angles of Fig. 5.

Table 2: The maximum and minimum rotor angle of the system without TCSC for tcl=198 m sec

Case	K	δ_{max} (degree)	δ_{min} (degree)
1	0	-	-
2	10	108.52	7.36
3	20	96.82	18.27
4	30	88.82	25.69

DISCUSSION

It can be seen from the Fig. 4 and Table 1 that resistance of the long line provides the improvement of the first swing stability but not for the second swing. Without the resistance of the long line, the maximum and the minimum rotor angle are 94.62 and -13.07 degree, respectively whereas with the resistance, the maximum and the minimum rotor angle are 93.64 and 12.68 degree, respectively. In practical long line, the resistance is very import parameters to determine the critical clearing time of the system whereas shunt capacitance doesn't affect on the damping performance because in practical lone line the shunt capacitance is very small. The critical clearing time of the system with exact long transmission line and without FACTS is around 197-198 m sec. As can be seen in Fig. 5 and Table 2, the system without TCSC (K = 0) is considered as unstable. However, with the TCSC the system can be considered as stable and the damping performance is improved as the gain is increased.

CONCLUSION

This study investigated the effects of The Thyristor Controlled Series Capacitor (TCSC) on transient stability of the Single Machine Infinite Bus (SMIB) with the consideration of the exact long transmission line model. The concept of two-port network is applied to simplify the mathematical model of the system. The reactance of generator, transformer exact long line model and TCSC can be represented by a net two-port network.

It was found from the simulation results that the resistance of the line provides the improvement of the first swing but not for the second swing. It was found from this study that for practical long line, the resistance is very import parameters to determine the critical clearing time of the single machine infinite system whereas shunt capacitance would not affect on critical clearing time of single machine infinite bus system. It was also found in this study that the TCSC can enhance transient stability of power system.

REFERENCES

- Nabhan, I. and M. Abdallah, 2010. A novel low-power cmos operational amplifier with high slew rate and high common-mode rejection ratio. *Am. J. Eng. Applied Sci.*, 3: 189-192. DOI: 10.3844/ajeassp.2010.189.192
- Osuwa, J.C. and E.C. Igwiro, 2010. Uninterruptible power supply using solar rechargeable battery. *Phys. Int.*, 1: 77-82. DOI: 10.3844/pisp.2010.77.82.
- Padma, S. and M. Rajaram, 2011. Fuzzy logic controller for static synchronous series compensator with energy storage system for transient stability analysis. *J. Comput. Sci.*, 7: 859-864. DOI: 10.3844/jcssp.2011.859.864
- Samikannu, R. and B.A. Poonamallie, 2011. Design of synthetic optimizing neuro fuzzy temperature controller for dual screw profile plastic extruder using labview. *J. Comput. Sci.*, 7: 671-677. DOI: 10.3844/jcssp.2011.671.677
- Subramani, C., S.S. Dash, V. Kumar and H. Kiran, 2012. Implementation of line stability index for contingency analysis and screening in power systems. *J. Comput. Sci.*, 8: 585-590. DOI: 10.3844/jcssp.2012.585.590
- Zarate-Minano, R., T. Van Custsem, F. Milano and A.J. Conejo, 2010. Sexuring transient stability using time domain simulations within an optimal power flow. *IEEE Trans. Power Syst.*, 5: 243-253, DOI: 10.1109/TPWRS.2009.203069.